



&

Simply Cottage

Welcomes You To The One and Only BIG WIN ISLAND GOLF CLUB

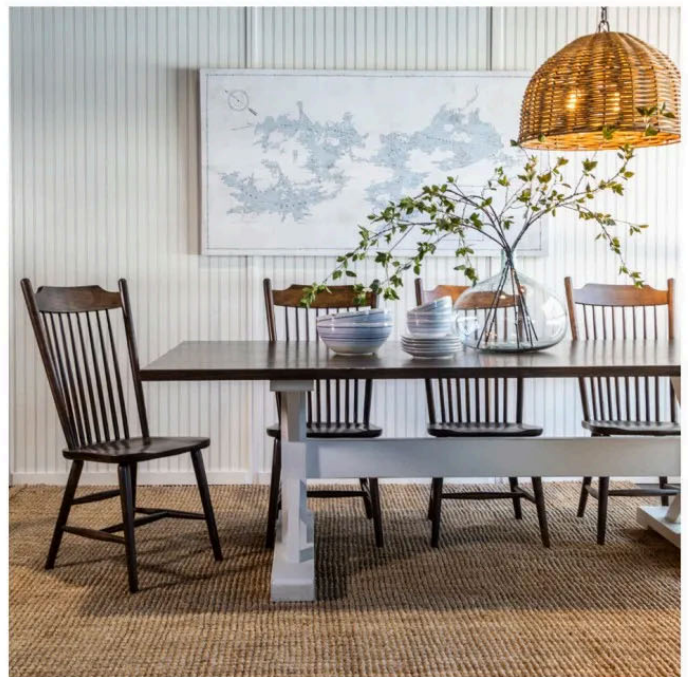
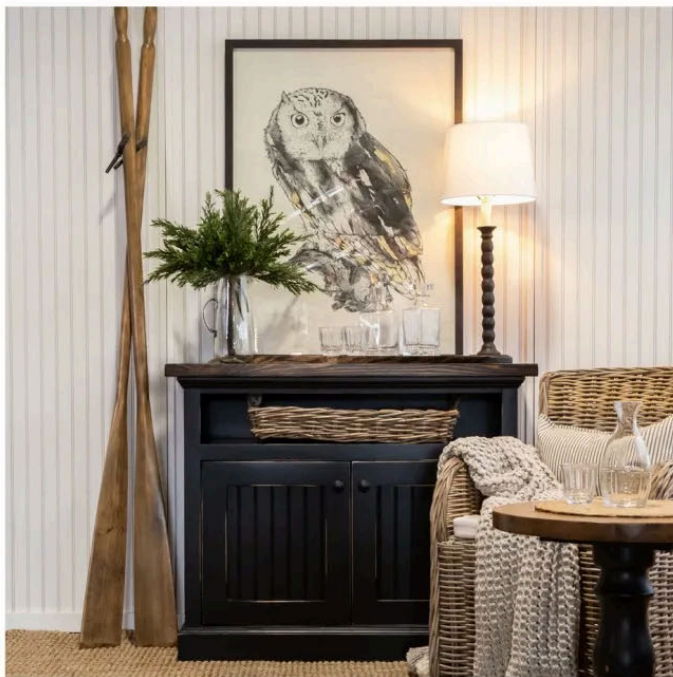


The Players Championship - Presented by *Simply Cottage*



Simply Cottage

Cottage Style Furniture, Decor and Art
101 Entrance Drive, Bracebridge, Ontario 705-646-2828
simplycottage.com



Simply Cottage

Featuring Ontario Made Wood Furniture
101 Entrance Drive, Bracebridge, Ontario 705-646-2828
simplycottage.com



The Players Championship - Presented by Simply Cottage

Bigwin Island Golf Club

Tuesday, September 17, 2024

NOTICE TO COMPETITORS

This information supplements the 2024 Local Rules and Terms of Conditions for the GTA AM Tour. The current issue of the Golf Canada Rules of Golf govern play. **Any rules on the host club scorecard do not apply. Penalty for breach of a Local Rule is the general penalty, unless otherwise noted.**

1. **OUT OF BOUNDS (Rule 18.2):** See GTA AM Tour Hard Card for how Out of Bounds is defined.

DRIVING RANGE: The range to the right of #1, #2, #3 and #9 is out of bounds and is defined by white lines, dots and white stakes.

2. **HOST CLUB DROP ZONES ARE NOT AVAILABLE:** Any Drop Zone available at this event will be indicated by a GTA AM Tour sign.

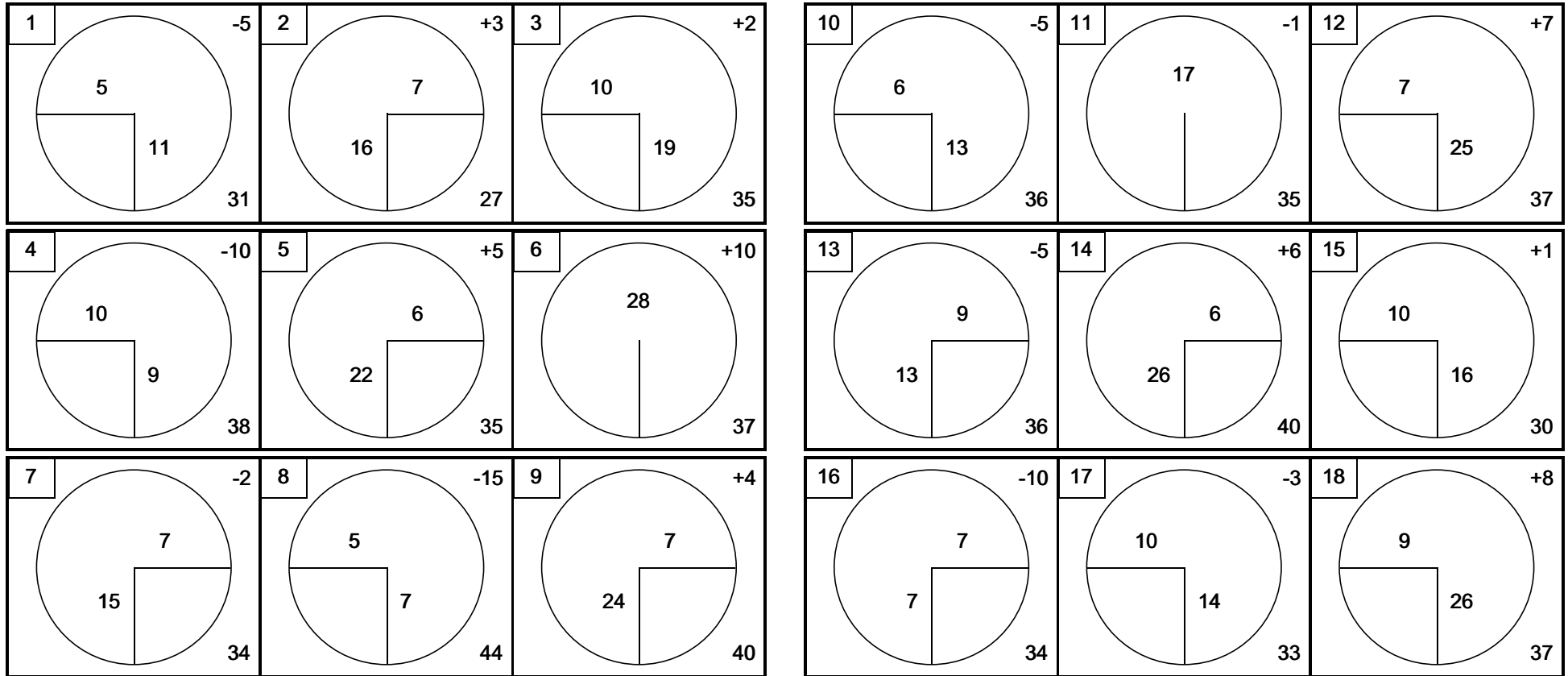
3. **PENALTY AREAS (Rule 17):** Red and yellow lines define the edge of the penalty area. Where penalty areas are not marked with lines, the change in the height of the grass defines the edge of the penalty area. Where there is no change in the height of the grass, the penalty area is defined by its natural boundaries. Unmarked penalty areas are red penalty areas.

HOLE #18: The lake on the right side of hole #18 is a red penalty area and extends to infinity.

4. **OBSTRUCTIONS AND GROUND UNDER REPAIR (Rule 16.1 applies):** Any areas of ground under repair will be marked or noted.

NO PLAY ZONES: Areas that are ornamental garden beds, turf nurseries or decorative flowerbeds are No Play Zones that are to be treated as Ground Under Repair. Player must proceed under Rule 16.1f.

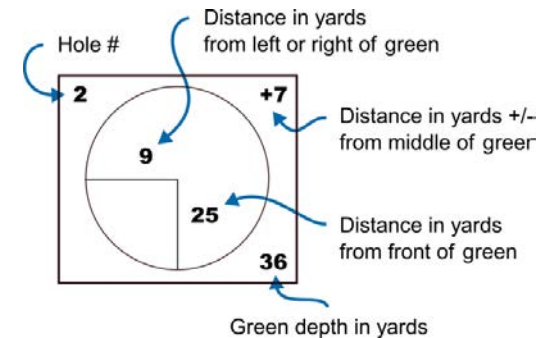
All rock is integral, including the rock wall on #15. No free relief under Rule 16.



The GTA AM Tour Pace of Play Policy is in effect for this tournament

Below are situations when groups are considered OUT OF POSITION and may be subject to penalty:

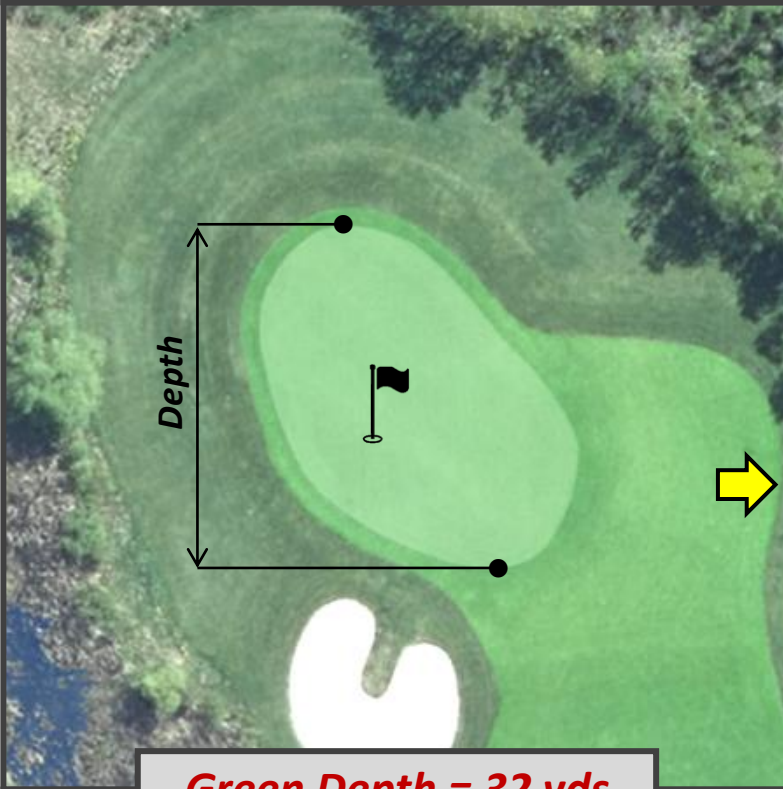
1. The first group to start will be considered out of position if, at any time during the round, they exceed the time allotted to play.
2. Any following group is out of position if,
 - A. when starting play of any par 3 or 4 hole the preceding group has completed play of the hole OR takes more than the allotted time to finish a hole, and
 - B. when starting play of any par 5 hole, the preceding group of players is on the putting green OR takes more than the allotted time to finish a hole.
3. Pace of play will be monitored by the GTA AM TOUR. Any group out of position MUST regain it's position.
4. A group that is out of position will normally be so informed by the Committee prior to monitoring and timing. However, the Committee reserves the right to time any group that the Committee deems is out of position, whether or not the group has been informed.
5. Any player in a group which is out of position is subject to penalty (as described in the GTA Am Tour's Pace of Play Policy) for undue delay if, during the round, he twice takes 40 seconds or more to play a stroke.



How To Use This Guide

Hole #6 (Par 4)

CH	A	B	ONS	C	R
342	342	331	331	320	320



Green Depth = 32 yds

On the left side of the page, you will see the hole number and par. The square image shows the green complex (aligned to the 150-yard marker) with the pin location for the event.

The green depth is also shown. A yellow arrow indicates the direction to the next tee (leave your clubs here when walking).

This box provides pro tips and general information about the hole.

On the right side, the yardages for each flight are shown. The hole image indicates distances from spots in the teeing ground (●●●) to various locations in the landing area (○). The distance text is colour coded to match the teeing ground spots. The actual tee marker positions will vary, but differences can be quickly paced off or estimated. Standard 100 ●, 150 ○, 200 ●, and 250 ● yard markers may also be shown.



◆ BIGWIN ISLAND ◆

Hole #1 (Par 4)

CH	A	B	ONS	C	R
366	366	336	336	336	336



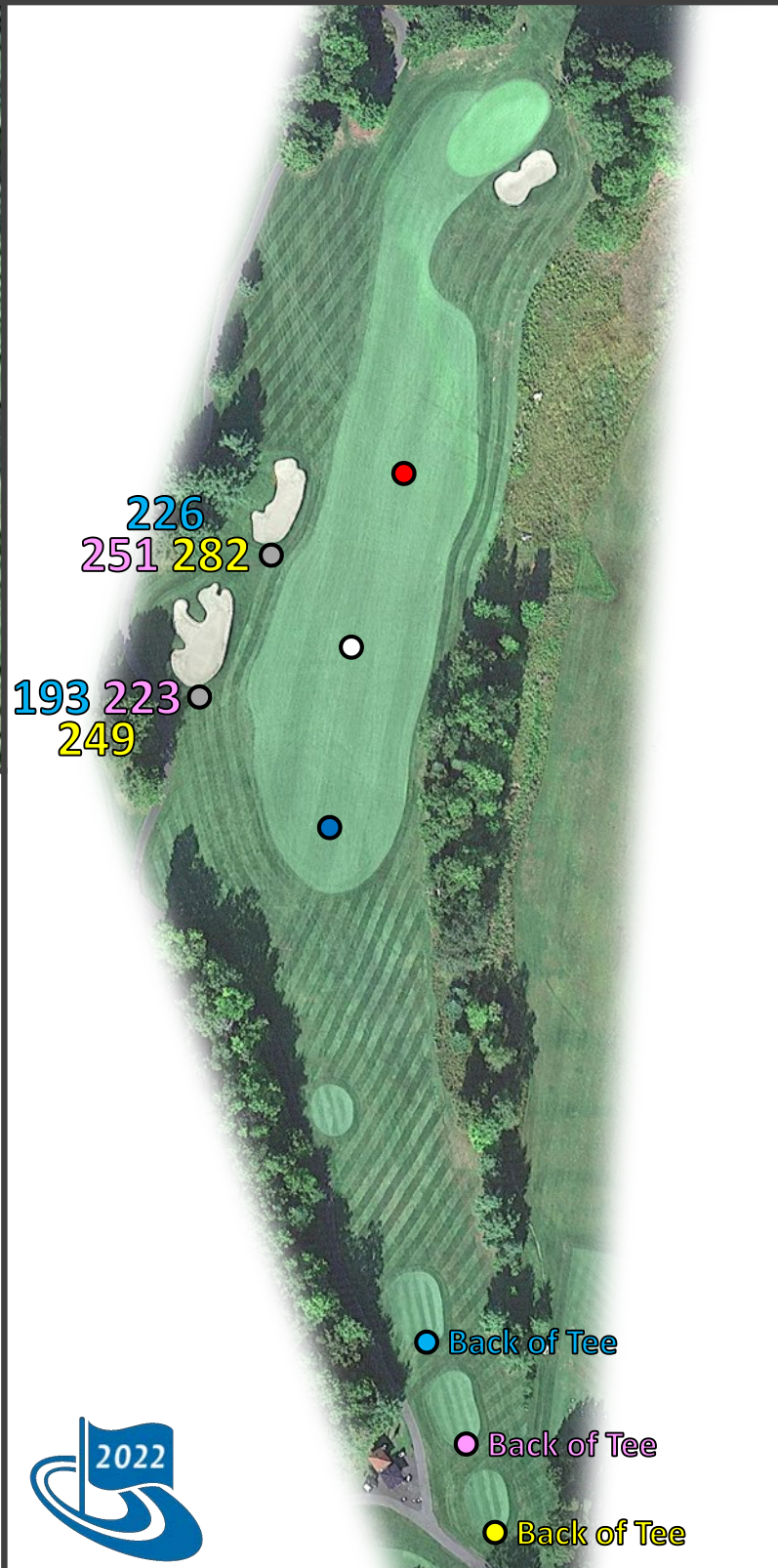
Green Depth = 31 yds (-5)

INDIAN HEAD

The 1st hole at Bigwin Island Golf Club is a gentle dogleg to the right, sweeping uphill from the prime landing area to an elevated green.

Measuring 392 yards from the championship tees, this opening Par 4 calls for a gentle right-to-left shot from the tee to hold the ball against the left-to-right slope in the fairway below the large fairway bunkers.

The green is large, so hitting it close will avoid a 3-putt start.



Simply Cottage

◆ BIGWIN ISLAND ◆

Hole #2 (Par 3)

CH	A	B	ONS	C	R
162	162	145	145	145	145



Green Depth = 27 yds (+3)

IROQUOIS PASSAGE

The second hole is a 162/145 yard Par 3 that offers the first highlight, a downhill tee shot with a peek over the trees of the Lake of Bays on the horizon.

Don't let the view of the lake distract you too much, as a potato-shaped green will offer some delicate chips for tee shots missing the putting surface.



Simply Cottage

◆ BIGWIN ISLAND ◆

Hole #4 (Par 3)

CH	A	B	ONS	C	R
148	131	131	131	110	110



Green Depth = 38 yds (-10)

LITTLE DEVIL

The 4th Hole is a devilish Par-3 with an extremely shallow diagonal green. Deep bunkers guard the green nearly everywhere, but the worst place to miss is long, forcing a play down the steep slope and making bogey a formidable score. A front pin is very accessible, but back pins require precise tee shots.

A spine in the back 1/3 means putts from one side to the other are nearly impossible.



Simply Cottage

◆ BIGWIN ISLAND ◆

Hole #5 (Par 4)

CH	A	B	ONS	C	R
389	369	369	369	279	279



Green Depth = 35 yds (+5)

THE TOWER

The Tower” requires a short forced carry before beginning a 40-foot rise to the green. Mr. Carrick challenges the golfer to take a bold line near the 2 trees & rock outcroppings to the right, but there is plenty of width to the left with some bunkers to snag a bailout. Approaches are semi-blind, but a clear line from the right allows for shots to be run onto the green; however, shots from the left must challenge the lone greenside bunker.



● Front of Tee

● Back of Tee



Simply Cottage

◆ BIGWIN ISLAND ◆

Hole #6 (Par 4)

CH	A	B	ONS	C	R
431	406	406	406	349	349



Green Depth = 37 yds (+10)

LOOKOUT

If holes 1-5 didn't impress you, #6 will get your attention. While the fairway seems wide, the tee shot drops over 100 feet and shots slightly offline can get wayward quickly! The approach appears innocent; however, the 2nd shot actually plays slightly uphill and anything landing right of centre may kick into the greenside bunker, while shots to the left may find a difficult collection area. Did you take a picture?



● Back of Tee

● Back of Tee

● Back of Tee



Simply Cottage

◆ BIGWIN ISLAND ◆

Hole #7 (Par 5)

CH	A	B	ONS	C	R
520	502	502	502	427	427



Green Depth = 34 yds (-2)

CHIEF BIGWIN

The 7th is a 536-yard dog leg Par 5 that works back uphill with a left-to-right sloping fairway, especially as you approach the green.

After finding a wide fairway, the approach is another ballgame with a narrow run-up sloping severely left to right. The ideal lay-up is as far left as possible, but a bailout right could mean a ball bounding into trouble. Aggressive players BEWARE!



Simply Cottage

◆ BIGWIN ISLAND ◆

Hole #8 (Par 4)

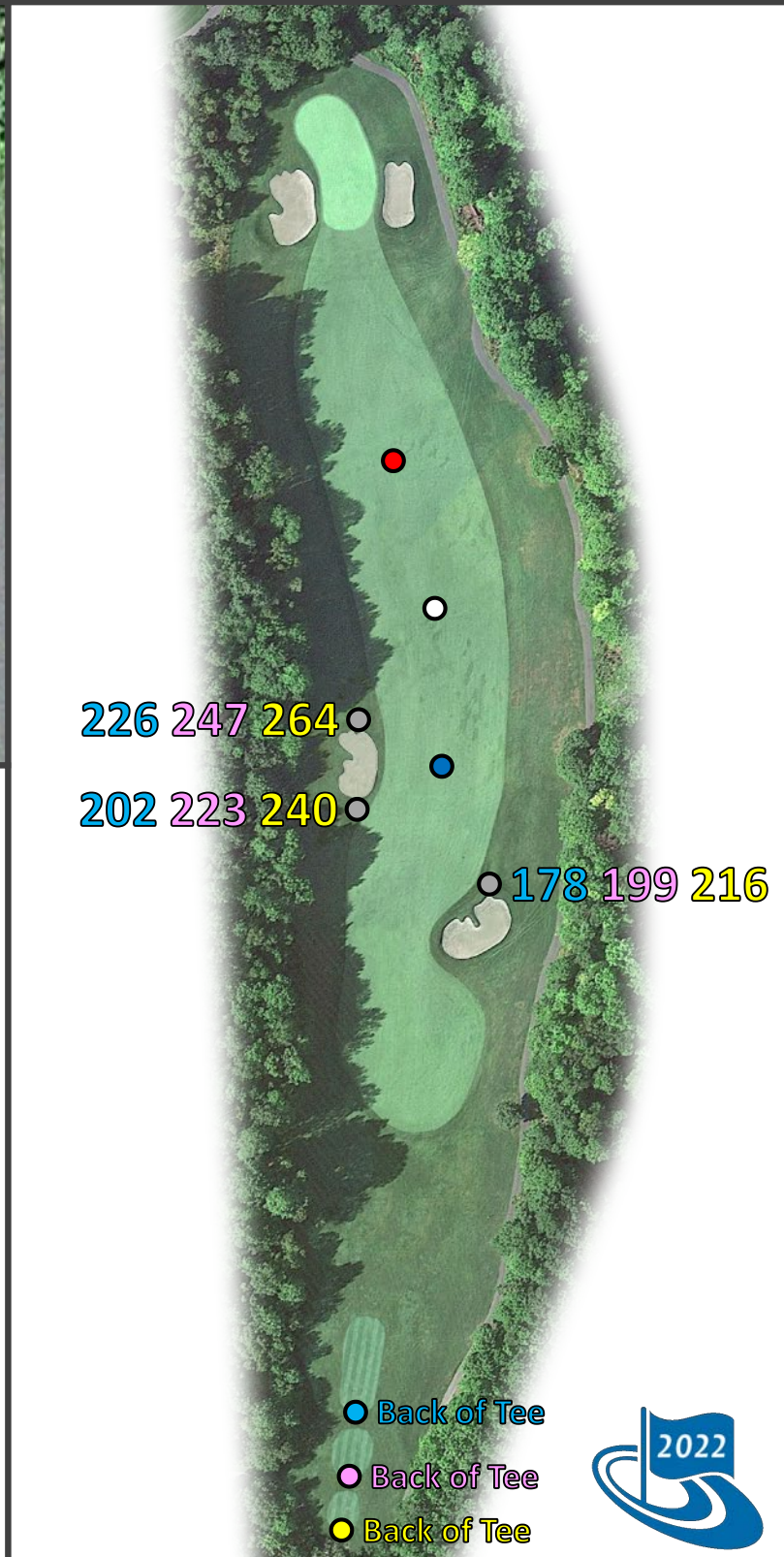
CH	A	B	ONS	C	R
429	429	399	399	399	399



Green Depth = 44 yds (-15)

MOWHAWK BELLE

The tough Par 4 8th is perhaps the most difficult hole on the golf course. At 429/399 yards, the player must navigate cross-bunkers left and right off the tee. Finding either of these bunkers is a sure bogey for most players; however, threading the needle is not guaranteed Par. With a slightly elevated green protected by bunkers & multiple contours, a possible 3-jack is lurking if you don't find the correct level.



- Back of Tee
- Back of Tee
- Back of Tee



Simply Cottage

◆ BIGWIN ISLAND ◆

Hole #9 (Par 4)

CH	A	B	ONS	C	R
378	378	348	348	348	348



Green Depth = 40 yds (+4)

TEMPTATION

The intriguing 9th hole is a 378/348 yard risk-reward Par 4 from an elevated tee with a double fairway. The easy play is to the wide-open right fairway, but that leaves a very difficult 2nd shot uphill over two gaping bunkers. The heroic play off the tee is a much longer carry over the bunkers to the left; however, a successful strike will leave an open shot to the green for a great Chance at a Birdie!



Simply Cottage

◆ BIGWIN ISLAND ◆

Hole #10 (Par 4)

CH	A	B	ONS	C	R
372	372	356	356	356	356



Green Depth = 36 yds (-5)

OS-KE-NON-TON

The 10th hole at Bigwin runs alongside #1 and, in many ways, provides a similar start as you make the turn. Like #1, it's a slight dogleg to the right with bunkers guarding the left side of the fairway. It's a bit longer than #1, but with less elevation change from tee to green and a welcoming putting surface, giving you a genuine chance for a Birdie or Par."



Simply Cottage

◆ BIGWIN ISLAND ◆

Hole #11 (Par 4)

CH	A	B	ONS	C	R
426	401	401	401	323	323



Green Depth = 35 yds (-1)

EDEN

The 11th at Bigwin is 1 of 2 holes with no fairway bunkers to navigate. Although the hole seems ominous at over 400 yards, the hole plays slightly shorter with the downhill approach. Swing away off the tee, but be sure to avoid the bunkers left and right on the approach. With a fair green sloping back to front and left to right, finding the green should mean a relatively safe Par!



● Back of Tee

● Back of Tee



Simply Cottage

◆ BIGWIN ISLAND ◆

Hole #12 (Par 3)

CH	A	B	ONS	C	R
170	170	152	152	152	152

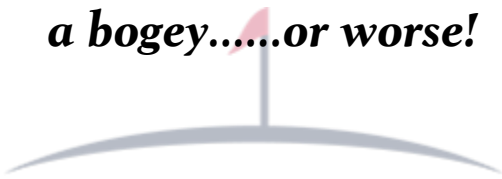


Green Depth = 37 yds (+7)

TRANQUILITY

The 12th hole, a 170/152-yard Par 3 plays as the longest one-shotter on the course. The green slopes sharply from back right to front left and sits in a very tranquil setting.

This hole might yield some Birdies; however, finding the greenside bunkers may yield a bogey.....or worse!



Simply Cottage

◆ BIGWIN ISLAND ◆

Hole #13 (Par 4)

CH	A	B	ONS	C	R
356	356	330	330	330	330



Green Depth = 36 yds (-5)

LEGERROCK

The 13th plays to a wide rolling fairway that tilts from left-to-right. Most golfers will lay up short of the severe fall-off@ 280 yards.

The 2nd shot is deceptively uphill over a treacherous bunker to a green protected by severe fall-offs long & right. Bouncing off the left slope is futile, as most shots stay in the rough, leaving a difficult pitch across a ridge to a back pin.



Simply Cottage

◆ BIGWIN ISLAND ◆

Hole #14 (Par 4)

CH	A	B	ONS	C	R
389	389	366	366	319	319



Green Depth = 40 yds (+6)

TWISTER

The 14th hole at Bigwin is a favourite of many golfers. "Twister" doglegs nearly 90 degrees right to left and is a tremendous risk/reward hole off the tee. You can play safe right of the gaping fairway bunkers & leave a semi-blind severe downhill approach or try and blow your shot over the bunkers, finding a speed slot & leaving less than 100 yards to the green perched among the hillside.



Simply Cottage

◆ BIGWIN ISLAND ◆

Hole #16 (Par 4)

CH	A	B	ONS	C	R
433	397	397	397	336	336

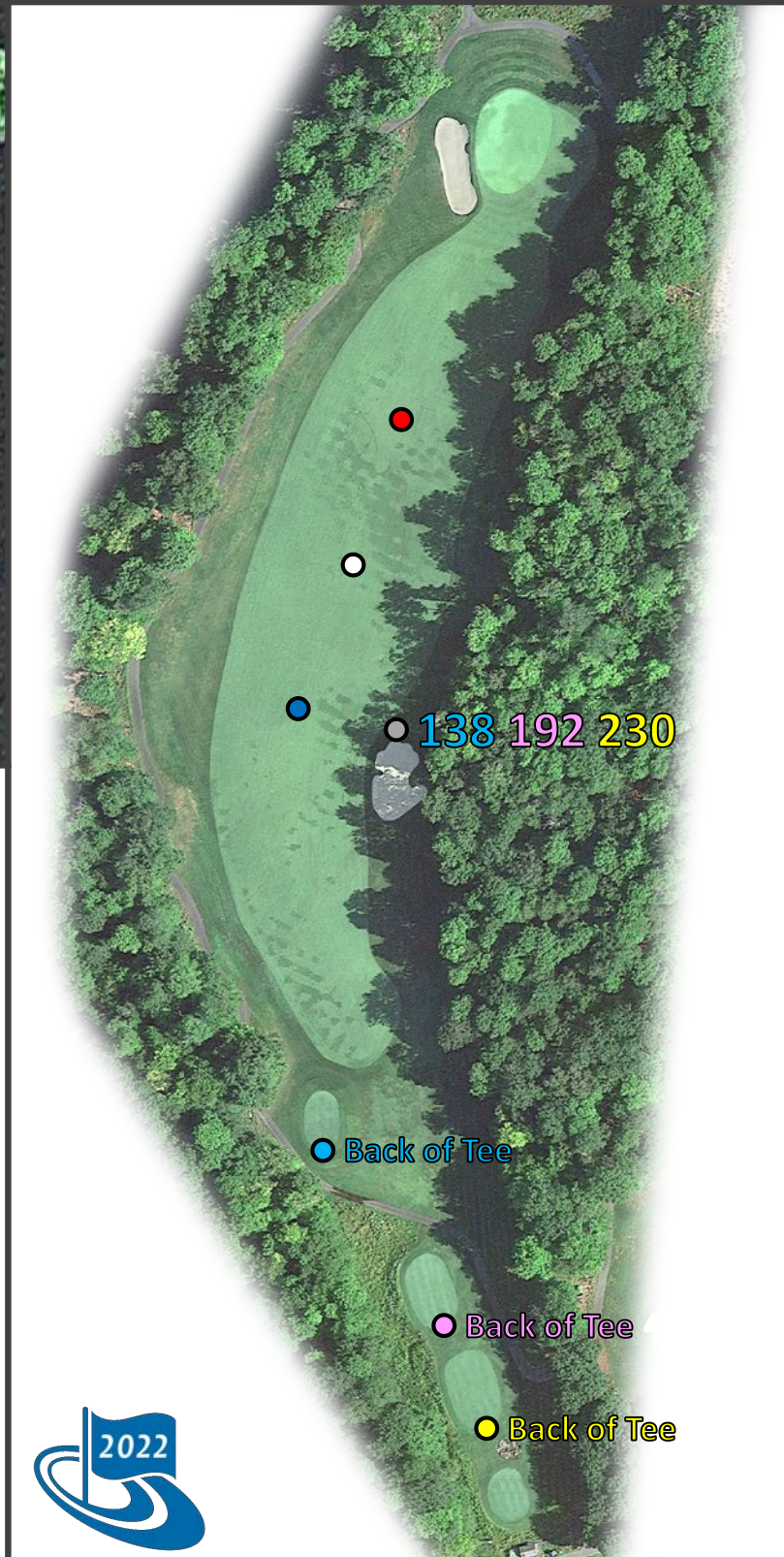


Green Depth = 34 yds (-10)

GREEN MILE

The 16th is the longest Par 4 on the course at 472 yards from the tips—a true brute. It swings from left to right, and the best shot must match that shape to be in a good position to reach the green in regulation.

The green site is well protected for a long Par 4 with a deep bunker left and grass depressions to the right. Bogey or worse at 16 will be a common conclusion.



Simply Cottage

◆ BIGWIN ISLAND ◆

Hole #17 (Par 3)

CH	A	B	ONS	C	R
166	166	166	166	166	166



Green Depth = 33 yds (-3)

JULIANA

The 166-yard 17th features an angled green that funnels toward a deep bunker protecting the left side of the putting surface. A back-left pin will test the courage of any golfer; however, a front-right pin will offer up many birdie chances.

A miss short & right gives the golfer a fair chance at saving Par to most pin positions.

This is the GTA Am Tour Hole in One Competition!



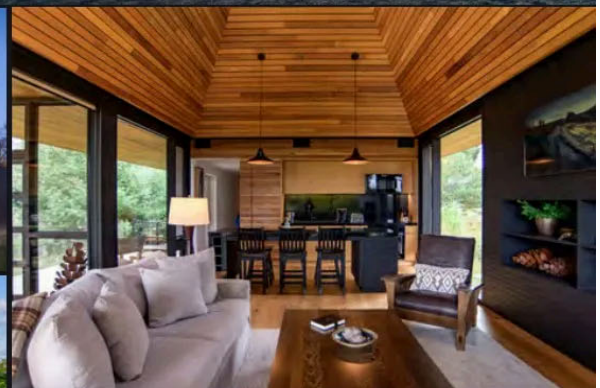
Simply Cottage



Immerse yourself in Muskoka's Ultimate Golf Experience

STAY & PLAY

Where Luxury meets Legacy!





◆ **BIGWIN ISLAND** ◆

FOR PRICING AND DETAILS PLEASE CONTACT
CLUBCABINS@BIGWINISLANDGC.COM

Bigwin Island Golf Club • 1137 Old Hwy. 117, Baysville, Ontario P0B 1A0

BIGWINISLAND.COM